

BLISS

bürotime

teknik döküman



# BLISS

Modern, genç ve dinamik  
çalışma alanlarının  
tamamlayıcısı...



Özge Çağla Aktaş



Duygu Aslanel

“Ofis ortak alanlarına konforu getirmeyi amaçlayarak tasarlanmış oturma birimidir. Geometrik formu, sade ve mütevazı dilini oluştururken, yumuşak iç yüzeyleri ile konforu maksimize eder. Ortak kullanım alanlarında koltuğun her açıdan estetik değer taşıması gerektiği bilinciyle detaylandırılan Bliss, modern, genç ve dinamik çalışma alanlarının tamamlayıcısı olacaktır..”

ürün ailesi  
tekli oturma



ahşap ayaklı



metal ayaklı

sehpa



melamin 60



60



60-100



60-100



80



mdf 60



60



60-100



60-100



80



deri 60



60



60-100



60-100



80



cam 60



60



60-100

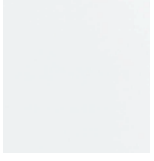


60-100

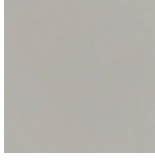


80

## sehpa tabla renk seenekleri melamin



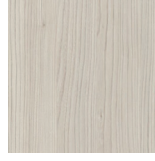
beyaz | white



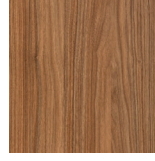
kum | sand



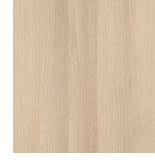
kül meşe | ash oak



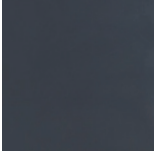
iğde | oleaster



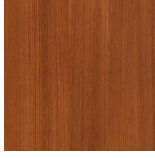
samba cevizi |  
samba walnut



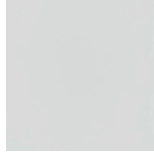
akasya | acacia



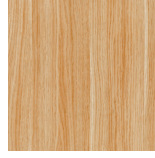
antrasit | antrachite



fındık | hazelnut



gri | grey

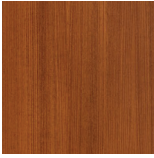


doğal meşe |  
natural oak



afrika meşe |  
african oak

## mdf



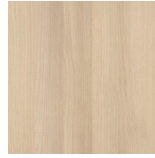
fındık | hazelnut



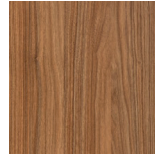
iğde | oleaster



kül meşe | ash oak



akasya | acacia

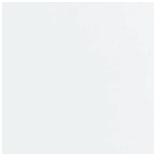


samba cevizi |  
samba walnut



doğal meşe |  
natural oak

## lake



beyaz | white



gri | grey



kum | sand

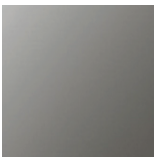


antrasit | antrachite



siyah | black

## cam

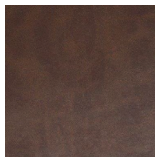


füme | smoked



satina beyaz |  
satin white

## kalın suni deri



B 102

koyu kahve |  
dark brown



B 103

antrasit | antrachite



B 101

taba | taba

## tabla özellikleri



melamin / 18mm



mdf\* / 30mm



cam / 10mm



deri / 18mm

\* mdf tabla bitişleri pahlı olup lake boyalıdır.

## bacak seçenekleri



metal yüksek bacak



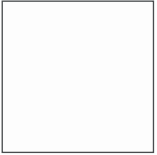
metal standart bacak



ağşap bacak

## ayak renk seçenekleri

### metal



beyaz | white



gri | grey



kum | sand



antrasit | antrachite



siyah | black



mat kromaj | mat chrome

### ağşap ayak



doğal | natural



amerikan ceviz | a. walnut

kayın ve gürgen ağşap üzerine natural ve a.ceviz cila uygulanır. Doğal malzeme olduğu için renk ve desen farklılıkları olabilir.

## koltuk renk seçenekleri

### keçe



W 101  
turuncu | orange



W 102  
mercan | coral



W 103  
kırmızı | red



W 201  
krem | cream



W 202  
kahve | brown



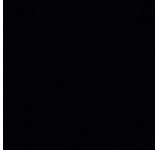
W 203  
yeşil | green



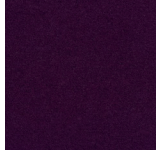
W 104  
gri | grey



W 105  
antrasit | antrachite



W 106  
siyah | black



W 207  
mor | purple

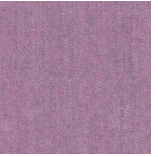


W 205  
lacivert | dark blue

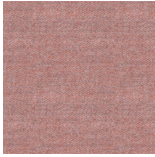


W 208  
mavi | blue

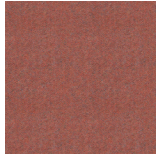
## camira synergy



LDS07  
leylak | lilac



LDS74  
mercan | coral



LDS73  
açık somon |  
light salmon



LDS48  
zeytin yeşili | olive



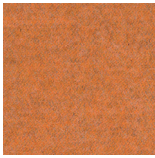
LDS46  
limon yeşili | lemon



LDS37  
kakao | cocoa



LDS33  
vizon | mink



LDS83  
açık turuncu |  
light orange



LDS39  
koyu kahve |  
dark brown

## kalın suni deri\*\*



B 102  
koyu kahve |  
dark brown



B 103  
antrasit | antrachite

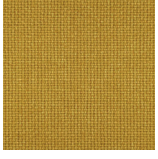


B 101  
taba | taba

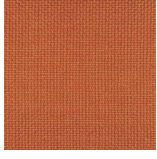
\*\* dış kabukta kullanılır.

## koltuk renk seçenekleri

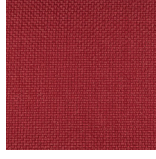
### panama



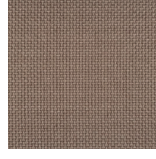
P 101  
sari | yellow



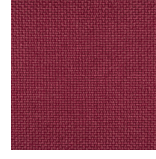
P 102  
turuncu | orange



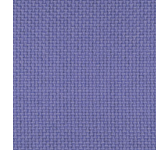
P 104  
kırmızı | red



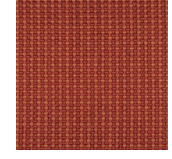
P 301  
açık kahve | light brown



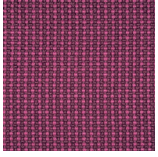
P 106  
bordo | burgundy



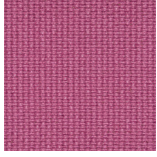
P 307  
lila | lilac



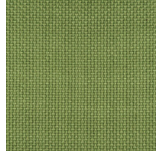
P 404  
punti turuncu | punti orange



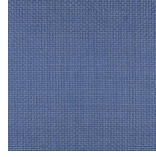
P 402  
punti pembe | punti pink



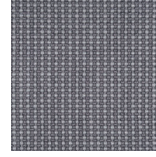
P 302  
pembe | pink



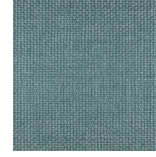
P 305  
fıstık yeşili | pistachio



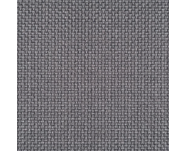
P 112  
buz mavi | ice blue



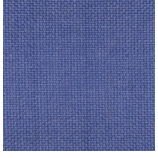
P 403  
punti gri | punti grey



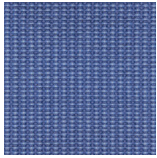
P 111  
turkuaz | turquoise



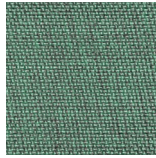
P 308  
antrasit | antrachite



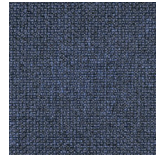
P 113  
saks mavi | blue



P 406  
punti mavi | punti blue



P 110  
yeşil | green



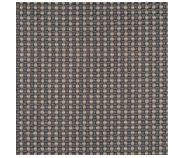
P 114  
lacivert | dark blue



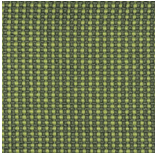
P 108  
hardal | mustard



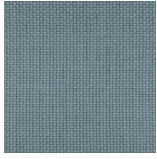
P 115  
siyah | black



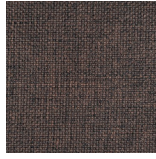
P 401  
punti kahve | punti brown



P 405  
punti yeşil | punti green

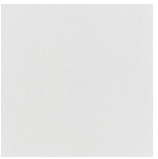


P 303  
gri | grey



P 109  
koyu kahve | dark brown

### suni deri



A 101  
beyaz | white



A 201  
hardal | mustard



A 202  
turuncu | orange



A 105  
taba | ginger



A 203  
kırmızı | red



A 104  
ceviz | walnut



A 102  
açık krem | light cream



A 113  
koyu bej | dark beige



A 204  
bordo | bordeaux



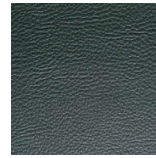
A 205  
mavi | blue



A 114  
gri | grey



A 110  
antrasit | antrachite



A 208  
yeşil | green



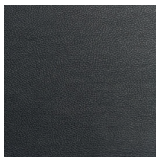
A 111  
koyu kahve | dark brown



A 206  
petrol mavi | petrol blue



A 207  
haki | khaki



A 112  
siyah | black

Bliss; ofis içinde çalışanların kendilerine vakit ayıracağı köşeler oluşturmak, bekleme alanlarında misafirlerin ağırlanacağı alanlar sunmak gibi sosyal veya bireysel kullanım senaryolarına uyum gösterir.



Oturum alanındaki yarım daire formu, kullanıcıya geniş bir oturma alanı sunar. Bu genişlik sırt arka köşelerinde dolgunlaştırılarak kullanıcı konforunu tamamlarken gövdeyi dışardan saran deri / kontra kullanıcıda aidiyet hissi uyandırır. Ahşap veya metal ayak alternatifleri ve ürün ailesinin tamamlayıcısı sehpaları ile kullanım alanlarını tamamlar.